



Witley C of E Infant School



Learn, love and flourish together

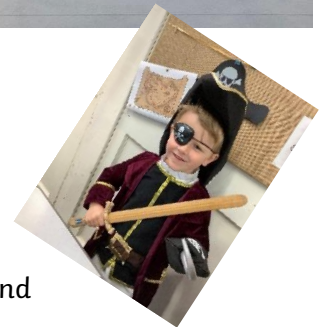
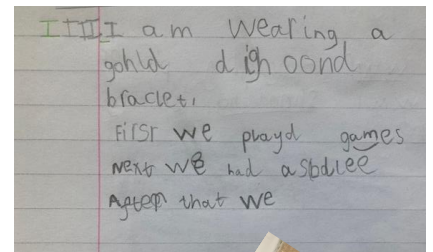
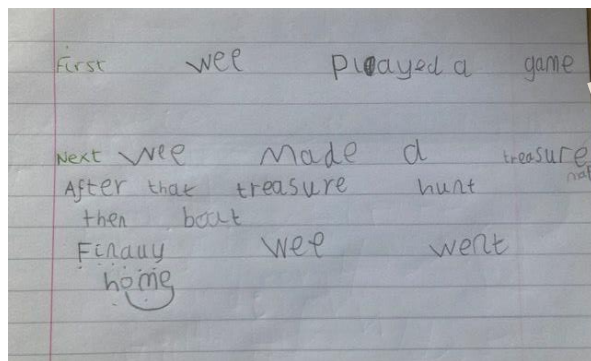
Newsletter no. 10 Autumn Term
Friday, 17th November 2023

Our value this half term is respect

Dear Parents/Carers

Pirate Fun in Year one!

There was great excitement in Year One this week when we held a Pirate Day. Bertie told everyone how he is related to the famous pirate Mary 'Mark' Read who sailed the seas in the 18th century!



On Tuesday, our Year 1 Pirate Class Assembly will start at 9.05 am. Parents and carers are welcome. Please enter the Jubilee Hall via the staff car park.

Rodborough Multi-skills event

It was Year 2's turn to travel to Rodborough this week to enjoy a morning of sports with Milford School and St Mary's Infant School. I was extremely proud of our eldest pupils and their exemplary behaviour did not go unnoticed by Rodborough staff. Well done Puffins!



Christmas Performance

Please note our dates at the end of the newsletter. Parents/carers **DO NOT** have to supply any costumes as we provide them. One less job for you to do at this busy time!


Spare Change Fundraiser!

Monday sees the start of our fundraiser in class. Each class are collecting loose change, it doesn't matter how small 1ps, 2ps, etc. The first class to fill the jar gets to choose our school Christmas tree! More information in the flyer further on in our newsletter.

FWS CHRISTMAS MARKET

Christmas is coming...

The FWS Christmas Market & Grotto

 **Event Timing: Saturday 9th December 2023, 15:30-17:30**

 **Event Address:**

The Church Field
Witley, Surrey
GU8 5PP

Booking for the FWS Christmas Market & Grotto is now open - exclusively for Witley School children and their families!

 **Please complete the form by Friday 24th November 2023** 

Have a lovely weekend!

Mrs Helen Szczepanski

Well done to the following children who are in our Gold Book this week:

Year R: Billy and Sylvie
Year 1: Poppy and Willa
Year 2: Samuel and Sam

Mrs Szczepanski's Headteacher Award in our Celebration Assembly goes to Henry W in Year 2.



Cake Raffle

Our cake raffle takes place in our Celebration Assembly.

Thank you to the Hamlet family for the giant cupcake!

Well done to Oscar in Year 2.



Have you changed your mobile number, home address or any other contact details?

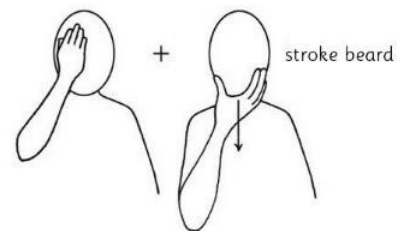
Please update your details via Arbor. If you have any problems logging on or using Arbor please contact the school office.



Here at Witley we regularly learn Makaton signs.



pirate



Did you Know?

Mrs Stratford is our Computing Lead and she has just completed the NSPCC 'Keeping Children Safe online' course.

The NSPCC website has a wealth of information to help you navigate around keeping children safe.

<https://www.nspcc.org.uk/>

Don't forget our regular monthly Online newsletter has lots of advice and support for parents/carers.





SPARE CHANGE COMPETITION

**WHICH CLASS CAN FILL A
JAR WITH CHANGE FIRST!
BRING IN ALL THAT SPARE
CHANGE LYING AROUND
YOUR HOUSE & EMPTY
OUT YOUR PIGGY BANK.
THE FIRST CLASS TO FILL
THE JAR WINS THE
CHANCE TO CHOOSE THE
WITLEY SCHOOL
CHRISTMAS TREE**

**BRING IN CHANGE FROM
MONDAY NOVEMBER
20TH
COMPETITION ENDS
NOVEMBER 30TH
THE RACE IS ON!**

Father Christmas

Is Coming to Witley

Saturday December 9th 3.30-6pm

at The Church Field a short walk up the church path

FWS bring you an immersive, magical, woodland experience & Christmas Market exclusively for the children & families of Witley School. As you explore the twinkling enchanted wood Santa's Elves will guide you through Elf School. There you can decorate cookies, make reindeer food, snuggle up for a special Christmas Story & tie your Christmas wish to the Wishing Tree. Then hidden amongst the pine trees in his starlit grotto you will meet Father Christmas & receive a special gift.

After all that excitement come & listen to live music while you browse the Christmas Market with a mulled wine or hot chocolate. There will be a special performance from all the children who can make it at 5.15pm dont miss it! Look out for booking forms via e mail.

£10 per child to include all of the above except anything bought in the Christmas Market. £7.50 for additional children. Under 2s free.

Prices kept the same as 2020.

Please complete forms by November 24th.

If you're struggling financially this year please get in touch with FWS for help.

Are you a school volunteer?

Over the next few months we have scheduled some safeguarding workshops in school for those of you who volunteer, on the following dates:

Friday 19th January 2024 9-9.45am

Thursday 29th February 2024 2.30-3.15pm



Please note that **ALL** volunteers will have to attend this workshop this year so we can ensure our helpers have all the information and skills they need to keep our children safe. Please contact the office to book yourself on one of the workshops.

TERM DATES 2023/24

Autumn Term 2023

Tuesday 21st November – Year 1 Class Assembly. Parents/carers invited at 9.05 am in the Jubilee Hall. Please enter the hall via the staff car park

Monday 27th November – Parent Tour no. 12 09.05 – 09.45 am

Friday 8th December – Non-uniform day in aid of FWS and Christmas Lunch

Saturday 9th December – FWS German Christmas Market and Grotto 3.30 – 6 pm

Monday 11th December– Christmas at All Saints Church – 10.30 – 11 am – parents welcome

Monday 11th December - EYFS Nativity Dress Rehearsal at 2.30 pm in the Jubilee Hall –
Parents/toddlers/babies welcome

Tuesday 12th December - EYFS Nativity performance at 2.30 pm in the Jubilee Hall – Parents welcome

Wednesday 13th December - KS1 Nativity Dress Rehearsal at 2.30 pm in the Jubilee Hall -
Parents/toddlers/babies welcome

Thursday 14th December - KS1 Nativity performance at 2.30 pm in the Jubilee Hall - Parents welcome

Last day of term - 15 December 2023 – early finish 1.05 pm. PLEASE NOTE EARLIER FINISH

Spring Term 2024

School starts – Tuesday, 2nd January 2024

Monday, 8th Sleepy Story Time returns for all year groups 4.30 – 5.30 pm – just drop your child off at the Jubilee Hall at 4.30 pm (via the staff car park) and collect from their classroom doors in the playground at 5.30 pm. Year R will use the middle door in the playground.



INSET DAY No.3 – Friday, 9th February

February half term - 12 February to 16 February

Last day of term – Thursday 28th March – early finish 1.05 pm. PLEASE NOTE EARLIER FINISH.

Summer Term 2024

INSET DAY No. 4 - Monday 15th April

School starts – Tuesday, 16th April

INSET DAY No.5 - Friday, 24th May

Summer half term - 27 May to 31 May 2024

Last day of term – Tuesday, 23rd July – early finish 1.05 pm. PLEASE NOTE EARLIER FINISH.

GET Teaching with the GLP

The Godalming Learning Partnership of schools are proud partners with Winchester University and have been training teachers for the last 6 years. Our blend of innovative, immersive school experience and training allied to academic study is used by Winchester as a model of best practice for their new partners.

We are running an online information evening on **Thursday 07 December at 7.00pm** for anyone interested in finding out more about our unique and bespoke School-led PGCE teacher training programme which starts in September 2024.

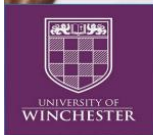
Register on Eventbrite for this online event using the QR code or link below:

[GET Teaching with the GLP](#)



For more info in the meantime, see our [GET Teaching](#) website and our *GET Teaching* information evening flier.

We look forward to meeting you.



Considering a career as a primary teacher?

Prefer the combination of university and school-led study from an outstanding teacher training provider?

Seeking to study in a group of schools that fundamentally believe in a genuinely holistic education?

Study to teach starting Sept '24 with the Godalming Learning Partnership!

Find out more about our unique school-led PGCE teacher training programme at our online information evening:

Thursday 07 December @ 7.00pm

Register for this event on Eventbrite using the QR code or link: [GET Teaching with the GLP](#)



There will be a presentation from our Course Coordinators explaining how the course runs, entry requirements, the enrolment process etc plus a Q&A session to answer any questions you may have on the course itself or the partnership schools.





CRECHE

PLAY,

**EXPLORE AND
LEARN**

**THE HEN
HOUSE!**

Creche now open 9.30am-11.30am

Wednesdays and Thursdays only

£25 for 2 hours

All staff qualified and trained.

Registration and booking essential.

Places are limited.



<https://wollahwollah.kidsclubhq.co.uk>

14b Lower Street, Haslemere, Surrey GU27 2NX

childcare@thehen-house.com



KICK OFF THE HOLIDAYS WITH FESTIVE
FUN, FOOTBALL AND FRIENDSHIPS

Pitch Pals

SPECIAL GUEST
COACH...
SANTA CLAUS

PITCH PALS CHRISTMAS CAMP

**MONDAY
18TH DECEMBER**

SANTA'S SHOOTOUT, REINDEER RELAYS,
MINCE PIE MADNESS, TINSEL TOURNAMENTS,
PRIZES AND SURPRISES.....

FOR BOYS & GIRLS IN RECEPTION TO YEAR 5

9AM-3.30PM

INDOOR/OUTDOOR USE